



## Lansdowne Road

Stanmore

£975,000

A four bedroom semi-detached house available on a popular residential road in Stanmore with Davidson Frost-Wellings.

On the ground floor the house has a large reception room with sliding doors leading to the rear garden. There is also a large dine-in kitchen, with doors also leading to the garden, plus a separate bay-windowed dining room and an integrated single garage.

On the first floor is a bay windowed master bedroom with fitted wardrobes and an ensuite bathroom. There are three further bedrooms also with built-in wardrobes and a family bathroom.

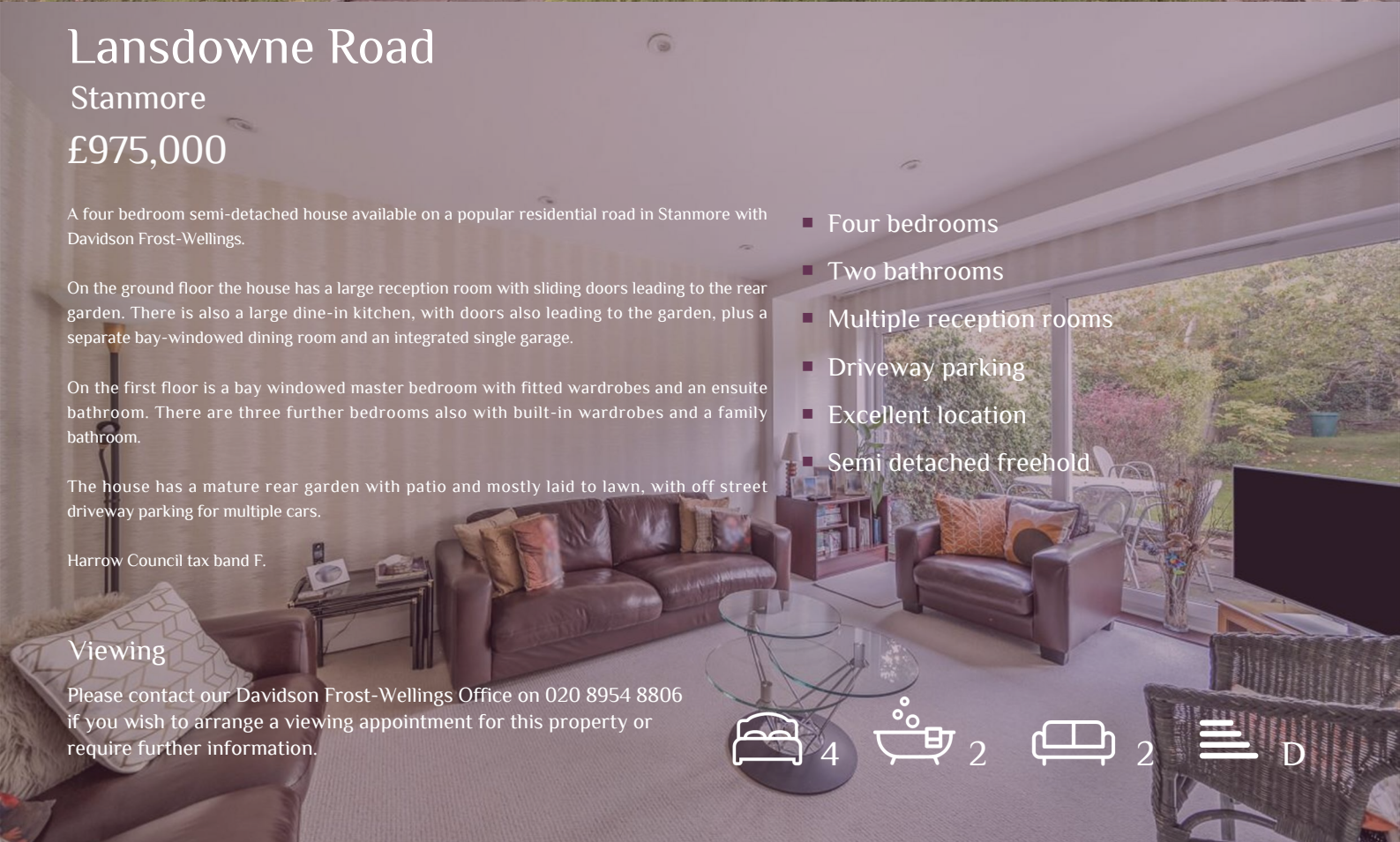
The house has a mature rear garden with patio and mostly laid to lawn, with off street driveway parking for multiple cars.

Harrow Council tax band F.

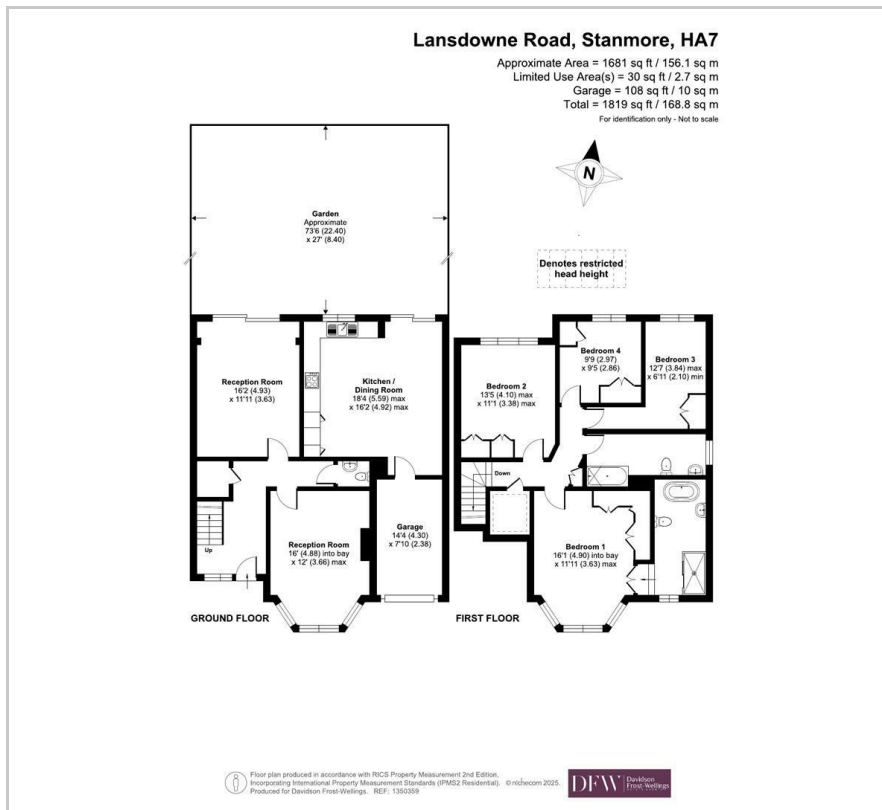
### Viewing

Please contact our Davidson Frost-Wellings on 020 8954 8806 if you wish to arrange a viewing appointment for this property or require further information.

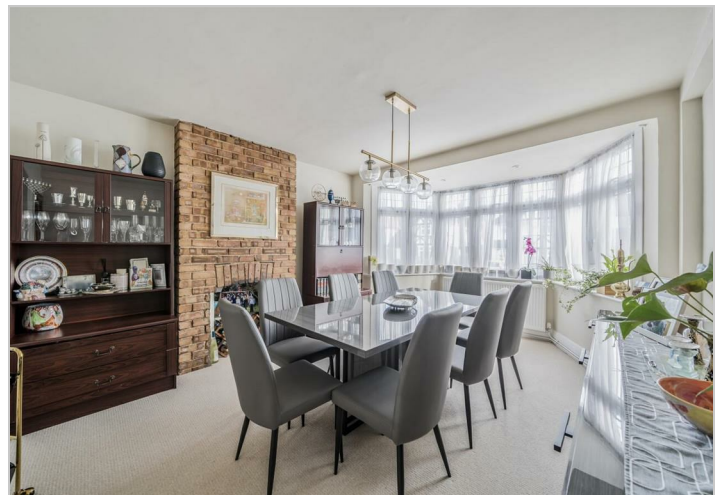
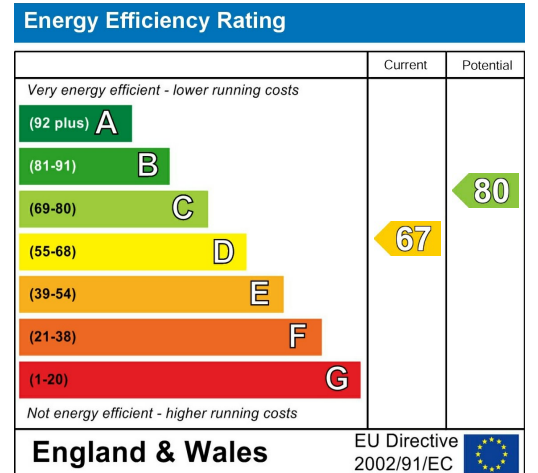
- Four bedrooms
- Two bathrooms
- Multiple reception rooms
- Driveway parking
- Excellent location
- Semi detached freehold



# Floor Plan



# Area Map



These particulars, whilst believed to be accurate are set out as a general outline only for guidance and do not constitute any part of an offer or contract. Intending purchasers should not rely on them as statements of representation of fact, but must satisfy themselves by inspection or otherwise as to their accuracy. No person in this firm's employment has the authority to make or give any representation or warranty in respect of the property.